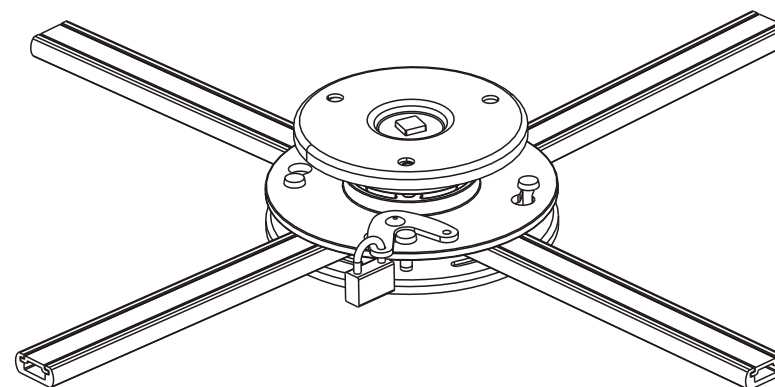


reflecta gmbh  
Junghansring 60  
72108 Rottenburg  
Germany

mail@reflecta.de  
www.reflecta.de

INSTALLATION MANUAL

# Projector Ceiling Mount



23065



**CAUTION:** DO NOT EXCEED  
RATED LISTED WEIGHT. SERIOUS  
INJURY OR PROPERTY DAMAGE  
MAY OCCUR!

ISSUED: JUN. 2013

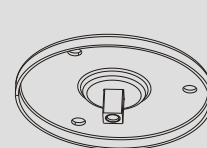
**NOTE:** Read the entire instruction manual before you start installation and assembly.

## ⚠ WARNING

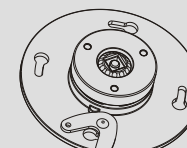
- Do not begin the installation until you have read and understood all the instructions and warnings contained in this installation sheet. If you have any questions regarding any of the instructions or warnings, please contact your local distributor.
- This mounting bracket was designed to be installed and utilised **ONLY** as specified in this manual. Improper installation of this product may cause damage or serious injury.
- This product should only be installed by someone with good mechanical ability who has basic building experience and fully understands this manual.
- Make sure that the supporting surface will safely support the combined weight of the equipment and all attached hardware and components.
- Always use an assistant or mechanical lifting equipment to safely lift and position the equipment.
- Tighten screws firmly, but do not over tighten. Over tightening can cause damage to the items, This greatly reduces their holding power.
- This product is intended for indoor use only. Using this product outdoors could lead to product failure and personal injury.

## Component Checklist

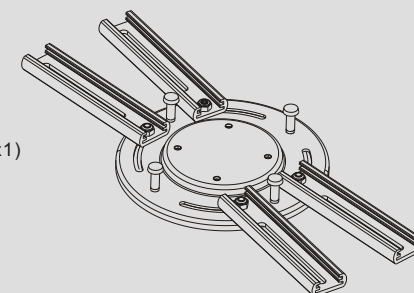
**IMPORTANT:** Ensure that you have received all parts according to the component checklist prior to installation. If any parts are missing or faulty, telephone your local distributor for a replacement.



ceiling plate (x1)  
A



projector plate assembly (x1)  
B



adapter bracket (x1)  
E



safe cover (x4)  
C



padlock (x1)  
D

### Package M



M3x25 (x4)  
M-A



M4x25 (x4)  
M-B



M5x25 (x4)  
M-C



M6x25 (x4)  
M-D



D4 washer (x4)  
M-E



D6 washer (x4)  
M-F



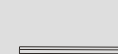
M5x8 (x4)  
M-G



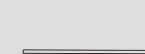
M8x20 (x1)  
M-H



ø12xø6x13 (x4)  
M-I



4mm allen key (x1)  
M-J



6mm allen key (x1)  
M-K

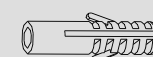


M5x10 (x1)  
M-L

### Package W



ST6.3x50 (x3)  
W-A

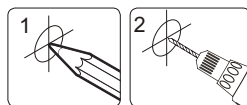
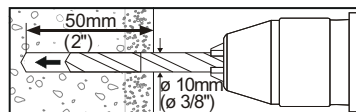


concrete anchor (x3)  
W-B

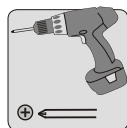
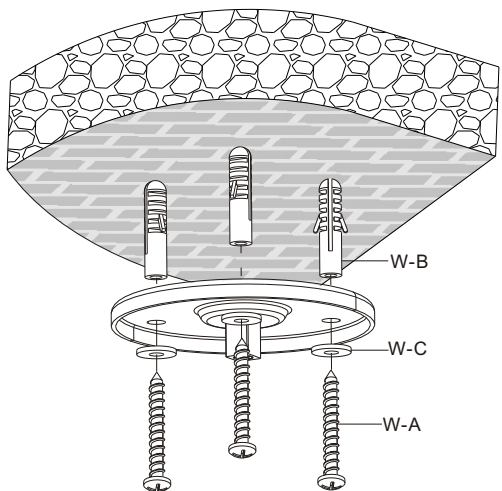
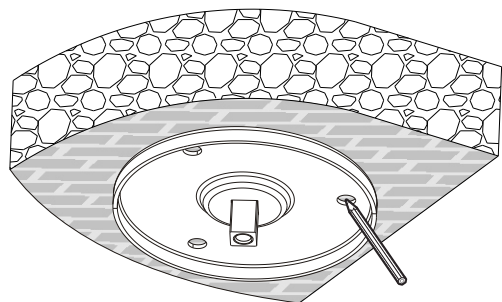


D6 washer (x3)  
W-C

## 1. For Solid Brick and Concrete Mounting



Drill three pilot holes



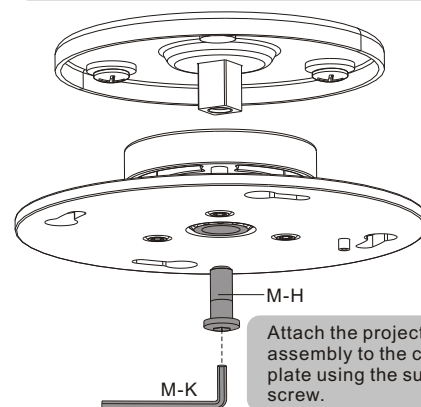
Screw the ceiling plate onto the ceiling



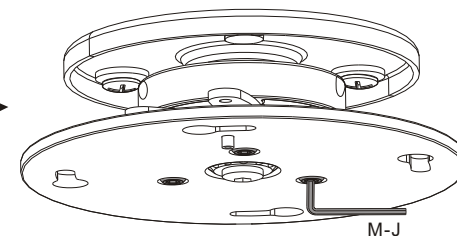
## WARNING

Installer must verify that the supporting surface will safely support the combined weight of the equipment and all attached hardware and components.

## 2. Installing the Projector Plate Assembly

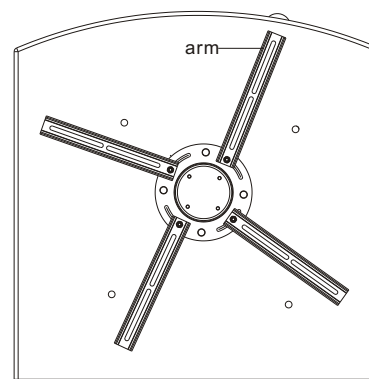


Attach the projector plate assembly to the ceiling plate using the supplied screw.

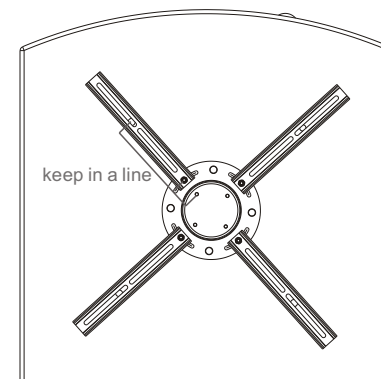


It is necessary to loosen or tighten the adjust screws with an Allen key according to the weight of the projector installed.

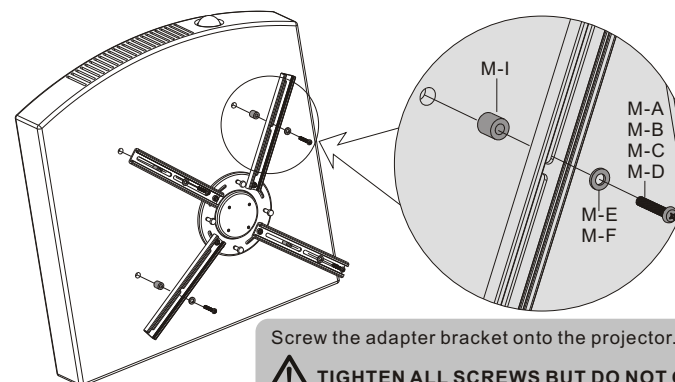
## 3. Installing the Adapter Bracket



Place the projector bracket as close as possible to the projector's center of gravity. Position the holes of arms over the mounting holes.



Make sure three point in a line to help with screwing the safe covers.



Screw the adapter bracket onto the projector.

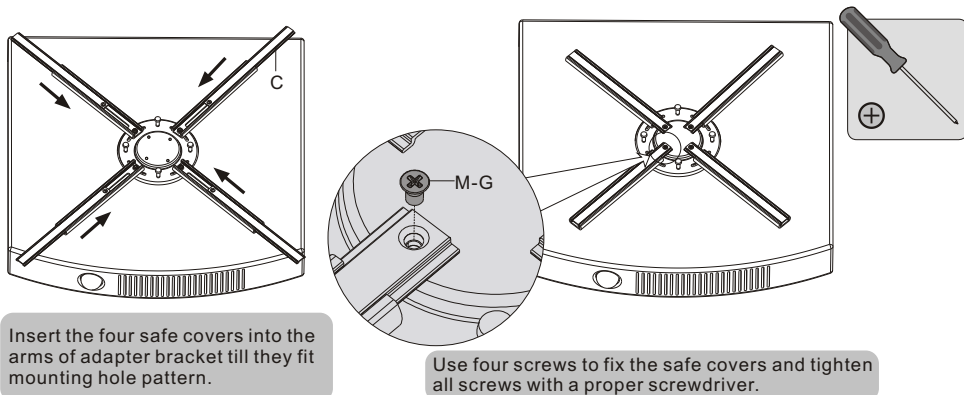


**TIGHTEN ALL SCREWS BUT DO NOT OVER TIGHTEN!**

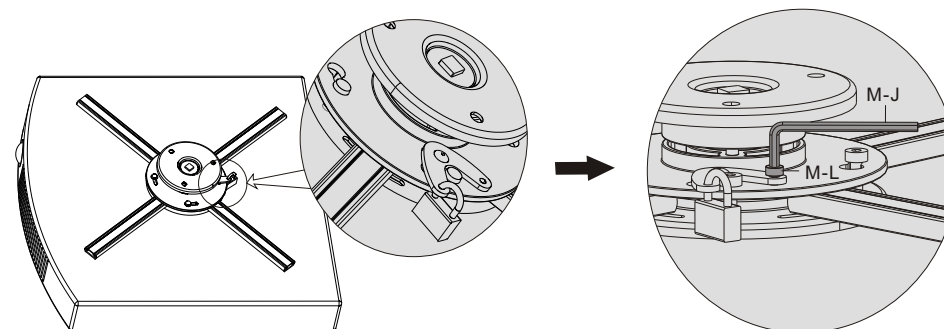
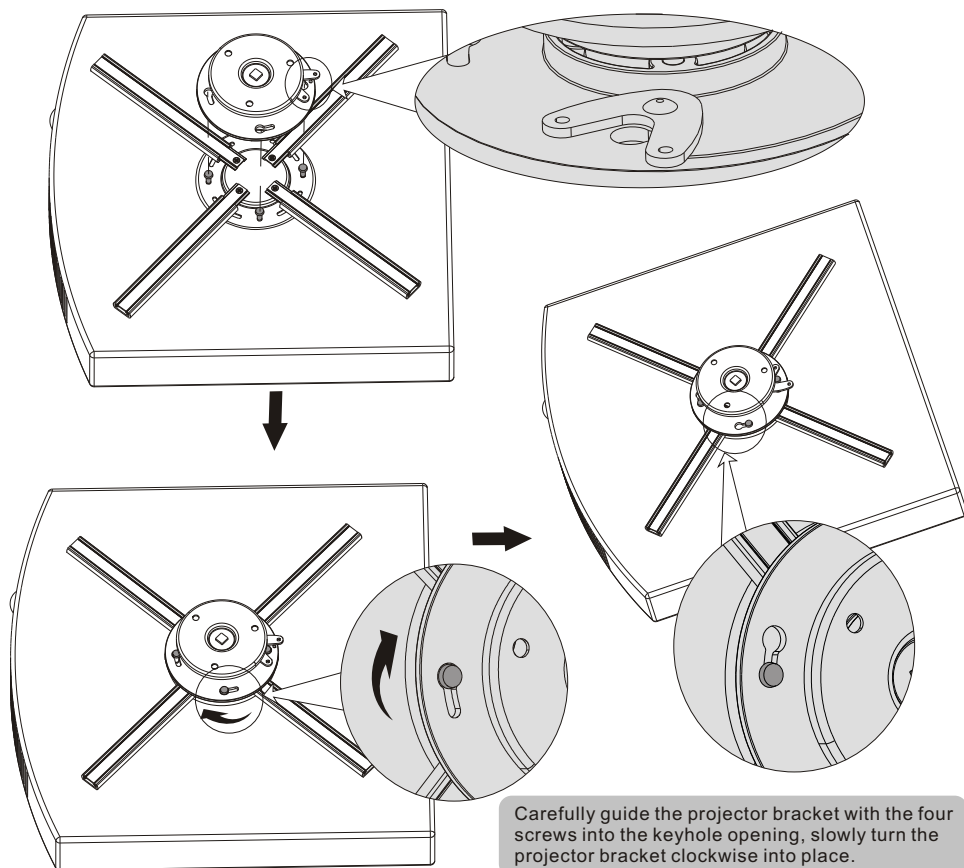
**Note:** If there are only three mounting holes using three arms of adapter bracket.

**Important:** If the projector does not have at least three mounting holes, do not use this adapter bracket.

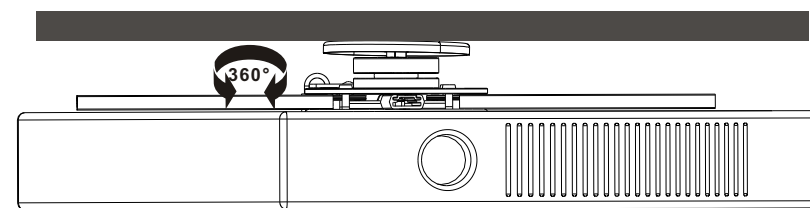
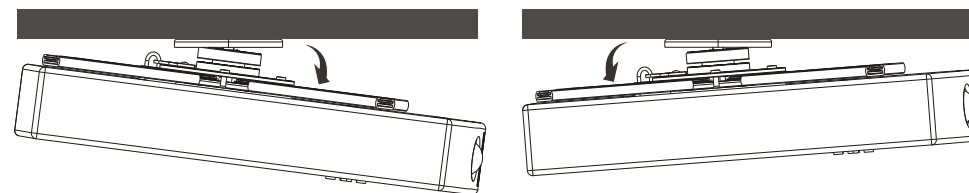
#### 4. Installing the Safe Covers



#### 5. Hanging the Bracket onto the Ceiling Plate



#### 6. Pitching Angle Adjustment



#### Maintenance

- Check that the bracket is secure and safe to use at regular intervals(at least every three months).
- Please contact your distributor if you have any questions.